



Board of Directors Meeting

Wednesday February 7, 2018

2:00 P.M. Board Convenes

**Kerman Community Center
15101 W. Kearney Blvd.
Kerman CA, 93630**

MINUTES

1. CALL TO ORDER

The meeting was called to order at 2:03

Directors Present:

Don Cameron
Matt Abercrombie
Brian Pacheco
Jeevan Singh
Jerry Rai

Directors Absent:

None

2. PUBLIC COMMENT

There were no public comments.

3. CLOSED SESSION

1. Conference with Legal Counsel—Potential exposure to litigation pursuant to Government Code Section 54956.9.

10. GSA FUNDING

Three different methods for funding the GSA were presented by Mr. Donlan. These were:

Prop 218 – Benefit Assessment. This requires an Engineer’s Report to identify the benefits to each parcel. It also requires a majority of the assessed acreage to approve the assessment.

Prop 218 – Service Fee- This requires a cost of service analysis to be performed. Under this option, the board could charge a service fee. This fee would go into effect unless there was a majority protest of the fee.

Prop 26 – Regulatory Fee – This would require developing a calculation or basis for assessment of a fee related to potential groundwater extractions.

After discussion amongst the Board and with input from members of the public present, the Board directed Mr. Hopkins and Mr. Donlan to further investigate the Proposition 218 Service Fee pathway and to bring a recommendation to the board in March.

11. AD HOC COMMITTEES

The Board will hear reports from the following Ad-Hoc committees:

- Technical Advisory
None
- Financial
None – Will meet the week of 2/20/18 to evaluate the draft budget.
- Outreach
Ms. Tufenkjian provided an updated. Handout attached as part of these minutes.
There has been an increase in the amount of web traffic.
- Human Resources
None

12. ADJOURNMENT

Director Cameron adjourned the meeting at 3:40 pm.

APPROVED:



Randy Hopkins, Secretary



McMullin Area
Groundwater Sustainability Agency

Stakeholder Outreach Report February 2018

McMullin Area GSA Updates E-Mail

- Update sent on December 12 highlighting Technical Advisory Committee meeting (see attached copy). The Update was sent to 69 Interested Persons. It had a 59% open rate.
- 2017 review: Seven updates were sent. The first update was sent in May to 11 Interested Persons. Interested Persons list currently has 74 contacts.

McMullin Area GSA YouTube Channel

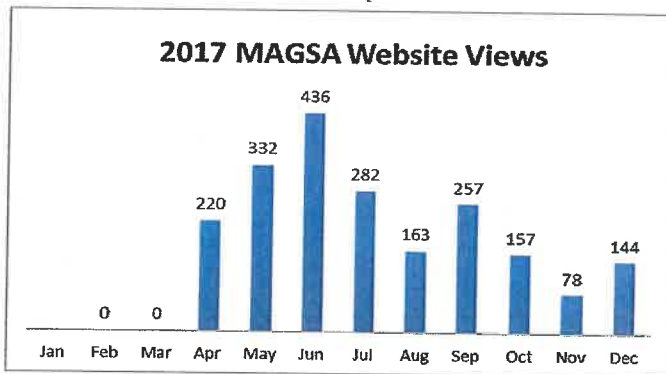
- As of January 31, the June 2017 Landowners Meeting video had 85 views.

Website

Month of January

- 39 unique visitors, 118 views
- Most active dates – November 1 (board meeting), November 15
- Top 5 pages visited - Homepage, Documents, News, Technical Consultant Discusses Progress, Resources

2017 Website Statistics



Top 5 pages visited : Homepage, Documents, Resources, About, Board of Directors

Referrals

- search engines
- kingsgroundwater.info
- northforkkings.org/resources
- facebook
- tularebasinwildlifepartners.org
- water.ca.gov/groundwater/sgma (DWR)
- southforkkings.org/resrouces

Referral from DWR's SGMA website

Local SGMA Websites

Visit the websites below for examples of how some local agencies are keeping the public informed about their SGMA implementation efforts.

- [Santa Cruz Mid-County Groundwater Agency](#)
- [Solano County Water Agency SGMA work group](#)
- [Eastern San Joaquin Groundwater Basin Authority](#)
- [Upper Ventura River GSA](#)
- [West Placer GSA](#)
- [McMullin Area GSA](#)
- [North Fork GSA](#)
- [Salinas Valley GSA](#)

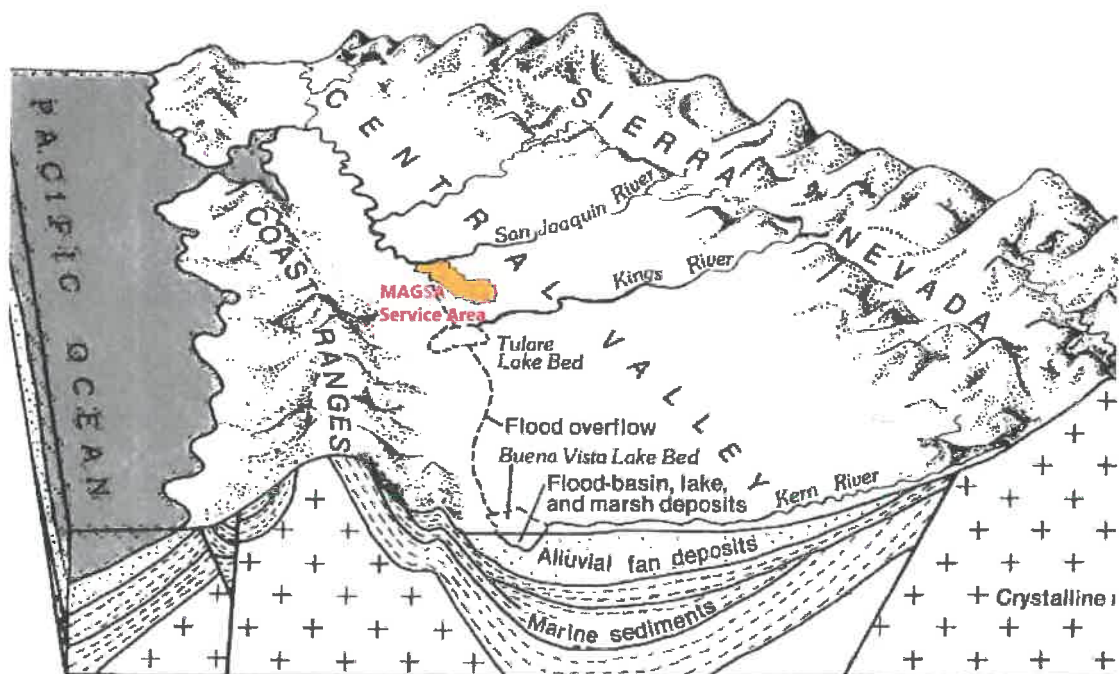
December 6, 2017 Ad Hoc Technical Advisory Committee Meeting Highlights

At the McMullin Area Groundwater Sustainability Agency's Ad Hoc Technical Advisory Committee held on December 6, the participants heard a report from McMullin's technical consultants, Provost & Pritchard Consulting Group (P&P). P&P provided an update on the development of the hydrogeologic conceptual model and the groundwater conditions and monitoring chapters of the Groundwater Sustainability Plan (GSP).

The GSP requires the identification of groundwater quality issues that may affect the supply and beneficial uses of groundwater, including a description and map of the location of known groundwater contamination sites and plumes. Water quality is one of the six undesirable results that must be addressed in the GSP. P&P staff members highlighted some of the groundwater quality issues that may be considered in the GSP, like the Raisin City oil fields:

Work is also being done on estimating the annual change in groundwater storage for the McMullin area over a 15-year period. The minimum threshold for reduction of groundwater storage shall be a total volume of groundwater that can be withdrawn from the basin without causing conditions that may lead to undesirable results.

Some of the elements being considered in the hydrogeologic conceptual model include understanding the structural trough of the Valley which governs the location of the sediments types. The McMullin Area service area is near the axis of the Valley on the eastside as shown in the visual below (click on map for larger image) that includes mostly San Joaquin River alluvial sediments and Dune Sands.



Block diagram by Dais and others (11)
Modified by R.W. Page, 1980

Using this information along with other factors, a picture of the McMullin Area's groundwater conditions can start to emerge. One example is on the map below (click on image for larger view), where several elements are considered to determine the best locations for recharge. On